

supplier of quality products to the lift and electrical industries

insight

Newsletter Issue 3 June/July 2021



PEW Electrical
Distributors

Welcome to our 3rd edition. This month we focus on two of our key services.

Offering safe and secure storage facilities 24/7/365 in support of your project work.

Our inhouse custom signage capabilities for safe sites and compliance as well as corporate wear and branding.



Customer storage facilities

Whatever the size of your business, we can provide the right storage solution for you. Whether you require a full container, pallet storage or just a 'Drop Box' pick up point for your engineers, we can help.

- Located 5 miles from London Docklands and 8 miles from the City
- Ideal for night works, where engineers have access around the clock
- We can receive your packages and place them in your chosen storage area
- Storage to suit your budget, pay only for the space you need



We have installed CCTV, ANPR monitoring, gated security and key fob access to provide secure access to our external storage facilities, all year round.

Enabling improved operational efficiency. Please contact us for more information.



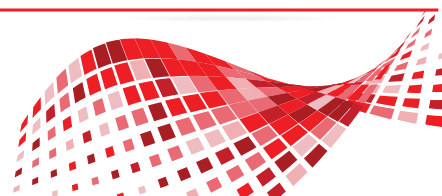
"Service is our most important product"

PEW Electrical Distributors Ltd

Unit 1 The iO Centre
59-71 River Road
Barking, Essex IG11 0DR

0208 507 1001

sales@pewelectrical.com
www.pewelectrical.com



Bespoke Signage Services

We realise that sometimes you might require a bespoke item that we do not hold in stock. It might be a specific sign, label, load plate or rope data plate, or perhaps a high visibility waistcoat, coverall or sweatshirt bearing your company logo.

Our workshop service is available to ensure that you get exactly what you are looking for, with no minimum order quantities or artwork fees!

Our print / cut machine creates labels in any shape or size, with stunning colours and image quality. By using different materials, we can even produce labels for heat application onto work wear.

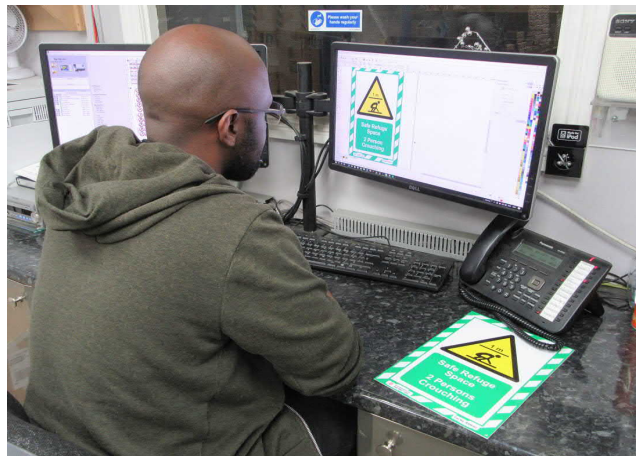
We only use high quality vinyl and eco-solvent inks to create your durable labels.

Send us your requirements to learn more.





We use different materials to achieve the right aesthetics; stainless steel, traffolyte, dibond.....



Team Member Focus

Introducing Darien, our Workshop Manager. Darien joined us in June 2019 to head up our growing signage and kit assembly services.

Our specialist in Adobe Creative, Darien works with our customers to create signage solutions with functionality and style. His recent career experiences have included Print Shop Manager (for his operations and organisational skills); Graphic Designer (for his creative style and attention to detail) and a while ago bar tending (for great customer service and juggling a hectic environment!).

Always adaptable, available and willing, Darien is driving our signage services forward!



Founded in 1980, Henning GmbH started out in metal processing, heating pumps and hydraulic dampers. Henning's journey into the elevator industry followed significant investment in 2000 and have since become the leading innovator in measurement systems.

PEW became an authorised stockist and distributor in 2015 and we continue to serve our customers with quick deliveries from stock, arranging calibration and importing to order.

ROPELOAD MEASUREMENT SYSTEM

AE12 - 455000



RC300 - 455250

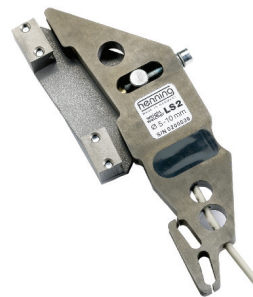
RC500 - 455255

RC1000 - 455260



LS1 - 455500

LS2 - 455400



LSM1 - 455600

LSM2 - 455700



RIDEwatcher



450400

in stock

LSM1 KIT
455101



LIGHTwatcher



460000

weight watcher ^{mobil}

ROPELOAD MEASUREMENT SYSTEM



MSM12 - 455105 for monitoring LSM sensors