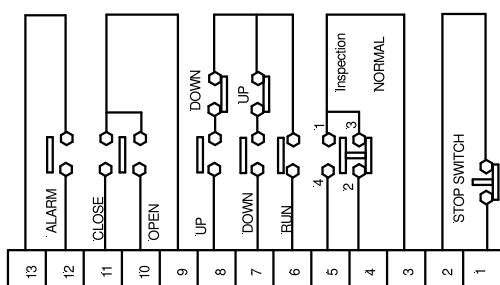




PEW Electrical
Distributors Ltd.

Technical Information for Car Top Control CTC17

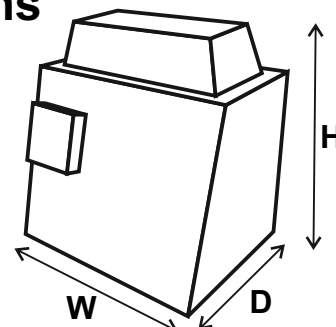
Wiring Diagram



Dimensions

D - 205mm
W - 280mm
H - 285mm

Weight - 5.04Kg*



The table below details a selection of spares for the CTC17 Car Top Control.

So, for example, if you require a spare for the Test button, simply refer to the items marked 'Test'.

| Order Code | Function | Description | Contact Block Required | Comments |
|------------|-------------------------|--|------------------------|--|
| 1044905 | All Buttons Except Test | N/C Contact Block - All Buttons Except Test | | |
| 1044906 | All Buttons Except Test | N/O Contact Block - All Buttons Except Test | | |
| BH100 | Inspection Bulkhead | Standard Mains Bulkhead | | |
| BH9/3M | Inspection Bulkhead | Emergency Maintained 3hr PL9W Bulkhead | | |
| HGLS42WBC | Inspection Bulkhead | 42 Watt BC Halogen Lamp | | Not Included |
| DEL11BC | Inspection Bulkhead | 11 Watt Low Energy Fluorescent Lamp | | Not Included |
| DSE9 | Inspection Bulkhead | Replacement 4 Pin Low Energy PL9W Fluorescent Lamp For Emergency CTC17 | | |
| M22M | Power Facility | Metal RCD Socket 30mA (Fused at 5 amps) | | Optional |
| 1044917 | Doors | 2 Position Rotary Switch | 2 x N/O | Contact Blocks Need to be Ordered Separately |
| 1044913 | Doors | Yellow Guard for Doors Switch | | |
| 1044904 | Up | White Up Push Button with Black Arrow | 1 x N/O, 1 x N/C | Contact Blocks Need to be Ordered Separately |
| 1044903 | Common (Run) | Blue Common (Run) Push Button White Twin Arrows | 1 x N/O | Contact Blocks Need to be Ordered Separately |
| 1044907 | Down | Black Down Push Button with White Arrow | 1 x N/O, 1 x N/C | Contact Blocks Need to be Ordered Separately |
| 1044918 | Light Switch | 2 Position Rotary Switch | 1 x N/O | Contact Blocks Need to be Ordered Separately |
| 1044909 | Test (fitted) | 2 Position Rotary Switch | 2 x N/O, 2 x N/C | Contacts and knob are Factory Fitted |
| 1044908 | Test (optional) | 2 Position Rotary Switch | 4 x N/O, 4 x N/C | Contacts are Factory Fitted |
| 1044948 | Test Switch Knob | Test Switch Spare Knob | | Does not come with Switch |
| 1044912 | Test | Yellow Shroud For Test Normal Switch | | |
| 1044933 | Alarm | Alarm Button with Symbol | 1 x N/O | |
| 1044935 | Complete Stop Switch | Push-Pull Mushroom Head Stop Switch | 1 x N/C | Contact Blocks Need to be Ordered Separately |
| SQU/SH1 | Stop | Square Shroud For Stop Switch | | Optional |

* Weight based on CTC17/W/EM